



PayU Africa

Integration Guide

Version 6.2.1

As of: 28.06.2017

Table of Contents

| | |
|---|-----------|
| About PayU Africa..... | 4 |
| General information about payment methods via PayU Africa | 4 |
| Process flow charts | 5 |
| Paygate interface | 6 |
| Definitions | 6 |
| Payment with PayU Africa via Paygate form interface | 6 |
| Credit card payment with PayU Africa via Paygate form interface | 8 |
| Credit card payment via Server-to-Server connection..... | 11 |
| Recurring credit card payment via Server-to-Server connection..... | 13 |
| Capture of a payment with PayU Africa..... | 14 |
| Credit with reference..... | 15 |
| Batch processing via the interface..... | 17 |

Document history

| Date | Name | Change |
|------------|-------------|---------------|
| 28.06.2017 | Peter Posse | First version |

ABOUT PAYU AFRICA

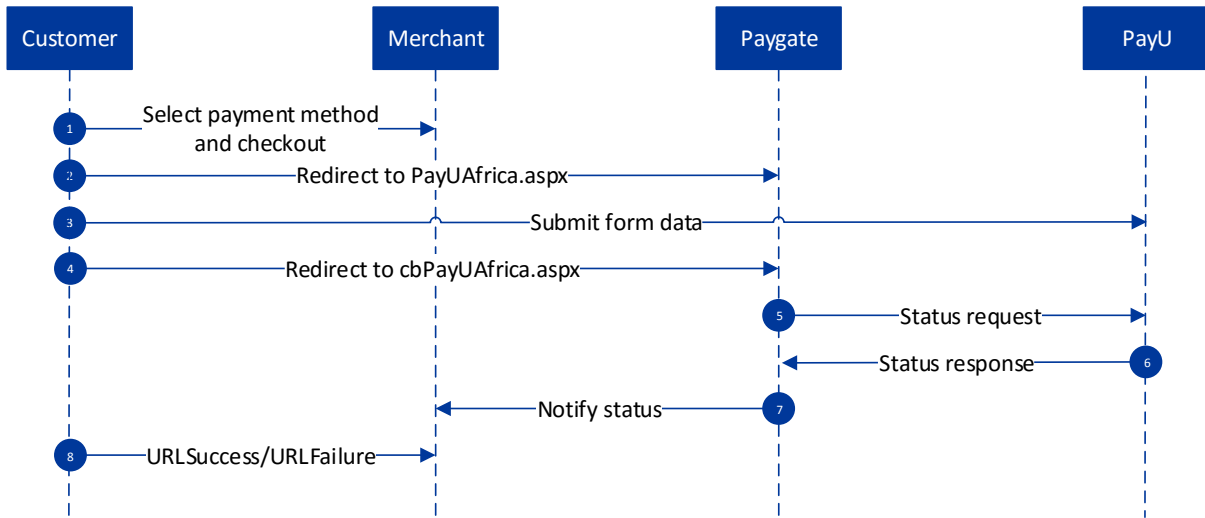
General information about payment methods via PayU Africa



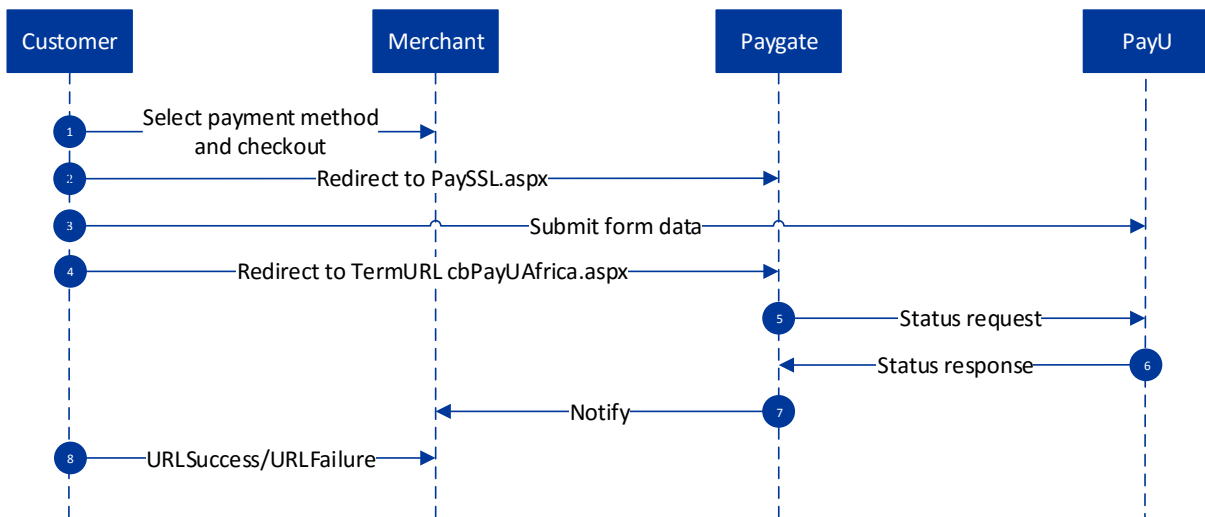
PayU Africa is leading PSP covering South African and Nigeria markets, offering all relevant payment methods: local card acquiring, online bank transfers, loyalty cards and eWallets. The advantage of using PayU Africa is reach into all local payment methods, which is crucial for high conversion.

Merchants looking to sell cross-border into Africa can fully capitalise on the market and meet customer payment expectations by using PayU India solution.

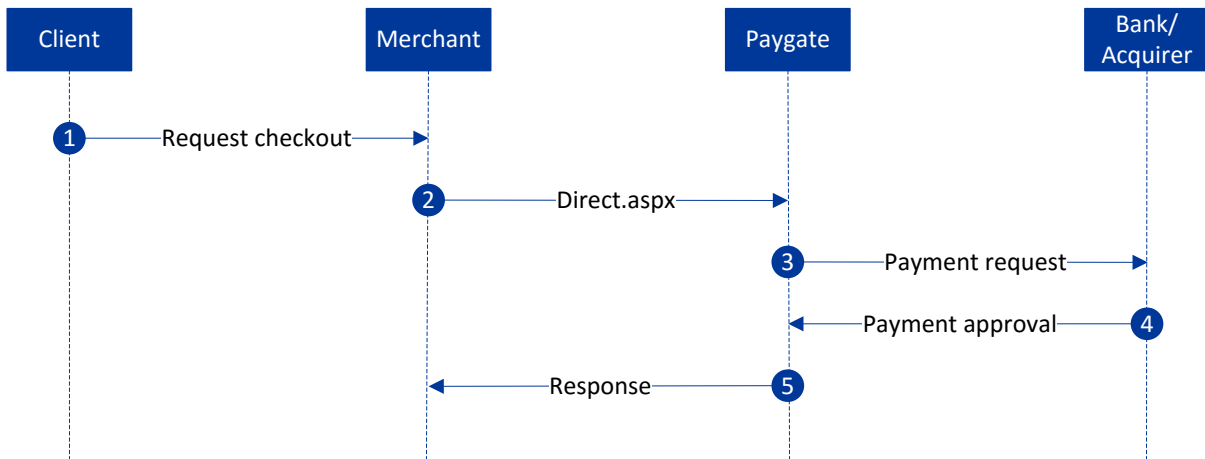
Process flow charts



Process flow for PayU Africa WebCheckout



Process flow PayU Africa via form interface payssl.aspx



Process flow PayU Africa via server-to-server interface direct.aspx

PAYGATE INTERFACE

Definitions

Data formats:

| Format | Description |
|--------|--|
| a | alphabetical |
| as | alphabetical with special characters |
| n | numeric |
| an | alphanumeric |
| ans | alphanumeric with special characters |
| ns | numeric with special characters |
| bool | boolean expression (true or false) |
| 3 | fixed length with 3 digits/characters |
| ..3 | variable length with maximum 3 digits/characters |
| enum | enumeration of allowed values |
| dtm | ISODateTime (YYYY-MM-DDDhh:mm:ss) |

Abbreviations:

| Abbreviation | Description |
|--------------|-------------|
| CND | condition |
| M | mandatory |
| O | optional |
| C | conditional |

Payment with PayU Africa via Paygate form interface

To make a payment with PayU in South Africa or Nigeria, go to the following URL:

<https://www.computop-paygate.com/payuafrika.aspx>

Notice: For security reasons, Paygate rejects all payment requests with formatting errors. Therefore, please use the correct data type for each parameter.

The following table describes the encrypted payment request parameters:

| Parameter | Format | CND | Description |
|------------|---------|-----|---|
| MerchantID | ans..30 | M | MerchantID, assigned by Computop |
| TransID | ans..64 | M | Merchant transaction number, which must be unique |
| RefNr | ns..30 | M | Unique reference number |

| | | | |
|-----------------------------|-----------|---|--|
| Amount | n..12 | M | Amount in the smallest currency unit (e.g. ZAR Cent) Please contact the helpdesk, if you want to capture amounts < 100 (smallest currency unit). |
| Currency | a3 | M | Currency, three digits DIN / ISO 4217 Presently only ZAR allowed. |
| MAC | an64 | M | Hash Message Authentication Code (HMAC) with SHA-256 algorithm |
| URLSuccess | ans..256 | M | Complete URL which calls up Paygate if payment has been successful. The URL may be called up only via port 443 This URL may not contain parameters: In order to exchange values between Paygate and shop, please use the parameter UserData . |
| URLFailure | ans..256 | M | Complete URL which calls up Paygate if payment has been unsuccessful. The URL may be called up only via port 443 This URL may not contain parameters: In order to exchange values between Paygate and shop, please use the parameter UserData . |
| Response | a7 | O | Status response sent by Paygate to URLSuccess and URLFailure , should be encrypted. For this purpose, transmit Response=encrypt parameter. |
| URLNotify | ans..256 | M | Complete URL which Paygate calls up in order to notify the shop about the payment result. The URL may be called up only via port 443 It may not contain parameters: Use the UserData parameter instead. |
| UserData | ans..1024 | O | If specified at request, Paygate forwards the parameter with the payment result to the shop |
| ReqID | ans..32 | O | To avoid double payments, enter an alphanumeric value which identifies your transaction and may be assigned only once. If the transaction is submitted again with the same ReqID, Paygate will not carry out the payment, but will just return the status of the original transaction. |
| OrderDesc | ans..100 | M | Description of purchased goods, unit prices etc. |
| CountryCode | a..3 | O | Country code 2 or 3 digits according to ISO 3166 for selecting the credentials. Presently only ZAF and NGA allowed. The default is ZAF. |
| Plain | ans..50 | O | A value to be set by the merchant to return some information unencrypted, e.g. the MID |
| Custom | ans..1024 | O | The merchant can submit several values separated by which are returned unencrypted and separated by &. Custom=session=123 id=456 will change in the answer to Session=123&id=456 |
| Customer data | | | |
| FirstName | ans..64 | M | First name of the customer |
| LastName | ans..64 | M | Last name of the customer |
| eMail | ans..64 | O | Email address of the customer |
| MobileNr | ans..40 | O | Customer's mobile telephone number |
| SocialSecurityNumber | ans..50 | O | Customer's Social security number |
| CustomerID | ans..64 | O | Customer number. If customer number is not submitted instead the email address is transferred to PayU, provided that this is submitted. |
| | | | |
| | | | |

Parameters for payments with PayU Africa WebCheckout

The following table describes the result parameters that the Paygate transmits to your **URLSuccess**, **URLFailure** or **URLNotify**. If you have specified the **Response=encrypt** parameter, the following parameters are forwarded Blowfish encrypted to your system:

| Parameter | Format | CND | Description |
|------------|---------|-----|----------------------------------|
| MID | ans..30 | M | MerchantID, assigned by Computop |

| | | | |
|----------------------|-----------|---|--|
| PayID | an32 | M | ID assigned by Paygate for the payment, e.g. for referencing in batch files. |
| XID | an32 | M | ID for all single transactions (authorisation, capture, credit note) for one payment assigned by Paygate |
| TransID | ans..64 | M | Merchant's transaction number |
| Status | a..30 | M | OK, AUTHORIZED or AUTHORIZE_REQUEST (URLSuccess) as well as FAILED (URLFailure) |
| Description | ans..1024 | M | Further details in the event that payment is rejected. Please do not use the Description but the Code parameter for the transaction status analysis! |
| Code | n8 | M | Error code according to Paygate Response Codes Excel file (part of the software client from www.computop.de/manual) |
| RefNr | ns..30 | O | Merchant's unique reference number |
| MAC | an64 | M | Hash Message Authentication Code (HMAC) with SHA-256 algorithm |
| CodeExt | n..10 | O | Error code from PayU, if agreed with Computop support |
| ErrorText | ans..256 | O | Error text from PayU, if agreed with Computop support |
| UserData | ans..1024 | O | If specified at request, Paygate forwards the parameter with the payment result to the shop |
| TransactionID | ans..64 | O | Transaction ID from PayU |
| Plain | ans..50 | O | A value to be set by the merchant to return some information unencrypted, e.g. the MID |
| Custom | ans..1024 | O | The merchant can submit several values separated by which are returned unencrypted and separated by &. Custom=session=123 id=456 will change in the answer to Session=123&id=456 |

Return parameters for URLSuccess, URLFailure and URLNotify with PayU Africa WebCheckout

Credit card payment with PayU Africa via Paygate form interface

In order to execute a credit card payment in South Africa or Nigeria with PayU Africa via a Paygate form, visit the following URL:

<https://www.computop-paygate.com/payssl.aspx>

Notice: For security reasons, Paygate rejects all payment requests with formatting errors. Therefore, please use the correct data type for each parameter.

The following table describes the encrypted payment request parameters:

| Parameter | Format | CND | Description |
|-------------------|----------|-----|---|
| MerchantID | ans..30 | M | MerchantID, assigned by Computop |
| TransID | ans..64 | M | TransactionID which should be unique for each payment |
| RefNr | ns..30 | M | Unique reference number which appears on your printed card account or in the EPA-file (Electronic Payment Advice). Format must be mutually agreed beforehand with Computop! |
| Amount | n..12 | M | Amount in the smallest currency unit (e.g. ZAR Cent) Please contact the helpdesk, if you want to capture amounts < 100 (smallest currency unit). |
| Currency | a3 | M | Currency, three digits DIN / ISO 4217. Presently only ZAR allowed. |
| MAC | an64 | M | Hash Message Authentication Code (HMAC) with SHA-256 algorithm |
| OrderDesc | ans..100 | M | Description of purchased goods, unit prices etc. |



| | | | |
|-----------------------------|-----------|---|--|
| URLSuccess | ans..256 | M | Complete URL which calls up Paygate if payment has been successful. The URL may be called up only via port 443 This URL may not contain parameters: In order to exchange values between Paygate and shop, please use the parameter UserData . |
| URLFailure | ans..256 | M | Complete URL which calls up Paygate if payment has been unsuccessful. The URL may be called up only via port 443 This URL may not contain parameters: In order to exchange values between Paygate and shop, please use the parameter UserData . |
| Response | a7 | O | Status response sent by Paygate to URLSuccess and URLFailure , should be encrypted. For this purpose, transmit Response=encrypt parameter. |
| URLNotify | ans..256 | M | Complete URL which Paygate calls up in order to notify the shop about the payment result. The URL may be called up only via port 443 It may not contain parameters: Use the UserData parameter instead. |
| UserData | ans..1024 | O | If specified at request, Paygate forwards the parameter with the payment result to the shop |
| ReqID | ans..32 | O | To avoid double payments, enter an alphanumeric value which identifies your transaction and may be assigned only once. If the transaction is submitted again with the same ReqID, Paygate will not carry out the payment, but will just return the status of the original transaction. |
| RTF | a1 | O | „I“ for initializing recurrent payments |
| CountryCode | a..3 | O | Country code 2 or 3 digits according to ISO 3166 for selecting the credentials. Presently only ZAF and NGA allowed. The default is ZAF. |
| Plain | ans..50 | O | A value to be set by the merchant to return some information unencrypted, e.g. the MID |
| Custom | ans..1024 | O | The merchant can submit several values separated by which are returned unencrypted and separated by &. Custom=session=123 id=456 will change in the answer to Session=123&id=456 |
| Customer data | | | |
| FirstName | ans..64 | M | First name of the customer |
| LastName | ans..64 | M | Last name of the customer |
| eMail | ans..64 | O | Email address of the customer |
| MobileNr | ans..40 | O | Customer's mobile telephone number |
| SocialSecurityNumber | ans..50 | O | Customer's Social security number |
| CustomerID | ans..64 | O | Customer number. If customer number is not submitted instead the email address is transferred to PayU, provided that this is submitted. |

Parameters for credit card payments with PayU Africa

To adapt the layout of the SSL-page to your shop you can use the following unencrypted parameters to configure colours, fonts and images.

| Parameter | Format | CND | Description |
|-------------------|----------|-----|--|
| Template | ans..20 | M | Name of XSLT-file with your own layout for the pay form. If you want to use the redesigned and downwards compatible Computop template, please transfer the template name "ct_compatible". If you want to use the responsive Computop template for mobile devices, please transfer the template name "ct_responsive". |
| Background | ans..256 | M | Background ambience of form: URL for a background image - HTML-colour value for background colour as HEX value or - HTML-colour name |
| BGColor | ans..7 | M | Form background colour: - HTML-colour value for background colour as HEX value or |

| | | | |
|-----------------|--------------|---|---|
| | | | - HTML-colour name |
| BGImage | ans..256 | M | Form background image: URL for a background image Please note that this value supersedes "BGColor". |
| FColor | ans..6 | M | Text colour: - HTML-colour value as HEX value or - HTML-colour name |
| FFace | a..10 | M | HTML-name for the font |
| FSize | n2 | M | Number for font size |
| Language | a2 (enum) | M | Language code: <de> German, <al> Albanian, <at> Austrian, <cz/cs> Czech, <dk> Danish, <en> English, <fi> Finish, <fr> French, <gr> Greek, <hu> Hungarian, <it> Italian, <jp> Japanese, <nl> Dutch, <no> Norwegian, <pl> Polish, <pt> Portuguese, <ro> Romanian, <ru> Russian, <sp> Spanish, <se> Swedish, <sk> Slovakian, <sl> Slovenian, <tr> Turkey, <zh> Simplified Chinese. No details means the language is German. |
| CCSelect | a..10 | M | Determines preselected card type in the form: VISA, MasterCard, AMEX, Diners, RuPay |
| URLBack | ans..256 | M | URL for "Cancel" button |
| Center | n1 | M | By default the form is centered vertically and horizontally. The value <1> centres the form at the top. |
| tWidth | ans..4 | M | Width of table for input of the credit card data as percent- (50%) or pixel values (320). |
| tHeight | ans..4 | M | Height of table for input of the credit card data as percent- (70%) or pixel values (480). |

Layout parameters for Paygate forms for credit card payments with PayU Africa

The following table describes the result parameters that the Paygate transmits to your **URLSuccess**, **URLFailure** or **URLNotify**. If you have specified the **Response=encrypt** parameter, the following parameters are forwarded Blowfish encrypted to your system:

| Parameter | Format | CND | Description |
|--------------------|-----------|-----|--|
| MID | ans..30 | M | MerchantID, assigned by Computop |
| PayID | an32 | M | ID assigned by Paygate for the payment, e.g. for referencing in batch files. |
| XID | an32 | M | ID for all single transactions (authorisation, capture, credit note) for one payment assigned by Paygate |
| TransID | ans..64 | M | Merchant's transaction number |
| Status | a..30 | M | OK or AUTHORIZED (URLSuccess) as well as FAILED (URLFailure) |
| Description | ans..1024 | M | Further details in the event that payment is rejected. Please do not use the Description but the Code parameter for the transaction status analysis! |
| Code | n8 | M | Error code according to Paygate Response Codes Excel file (part of the software client from www.computop.de/manual) |
| CodeExt | ans..10 | O | Error code from PayU, if agreed with Computop support |
| ErrorText | ans..256 | O | Error text from PayU, if agreed with Computop support |
| MAC | an64 | M | Hash Message Authentication Code (HMAC) with SHA-256 algorithm |
| UserData | ans..1024 | O | If specified at request, Paygate forwards the parameter with the payment result to the shop. |
| RefNr | ans..30 | O | Merchant's unique reference number |
| PCNr | n..16 | O | Pseudo Card Number: Random number generated by Paygate which represents a genuine credit card number. The pseudo card number (PCN) starts with |

| | | | |
|----------------------|-----------|----|--|
| | | | 0 and the last 3 digits correspond to those of the real card number. You can use the PCN like a genuine card number for authorisation, capture and credits. |
| CCBrand | a..22 | O | In combination with PCNr: Name of credit card brand like Visa, MasterCard etc. |
| CCEpiry | n6 | O | In combination with PCNr: Expiry date of the credit card in the format YYYYMM. |
| MaskedPan | an..19 | OC | Masked card number 6x4 |
| TransactionID | ans..64 | C | Transaction ID from PayU |
| TokenExt | an..64 | C | For recurring payments (RTF=I) the Token is transmitted for referencing the credit card data |
| Plain | ans..50 | O | A value to be set by the merchant to return some information unencrypted, e.g. the MID |
| Custom | ans..1024 | O | The merchant can submit several values separated by which are returned unencrypted and separated by &. Custom=session=123 id=456 will change in the answer to Session=123&id=456 |

Return parameters for URLSuccess, URLFailure and URLNotify with PayU Africa

Credit card payment via Server-to-Server connection

In order to execute a TLS credit card payment without 3D Secure with PayU Africa in South Africa or Nigeria via a server-to-server connection, call the following URL:

<https://www.computop-paygate.com/direct.aspx>

Notice: For security reasons, Paygate rejects all payment requests with formatting errors. Therefore, please use the correct data type for each parameter.

The following table describes the encrypted payment request parameters:

| Parameter | Format | CND | Description |
|-------------------|-----------|-----|--|
| MerchantID | ans..30 | M | MerchantID, assigned by Computop |
| TransID | ans..64 | M | Merchant's transaction number |
| RefNr | ns..30 | C | Merchant's unique reference number |
| Amount | n..12 | M | Amount in the smallest currency unit (e.g. ZAR Cent) Please contact the helpdesk, if you want to capture amounts < 100 (smallest currency unit). |
| Currency | a3 | M | Currency, three digits DIN / ISO 4217 Presently only ZAR allowed. |
| Capture | an..6 | OC | Determines the type and time of capture. AUTO : capturing immediately after authorisation (default value). MANUAL : capturing made by the merchant. <Number> : Delay in hours until the capture (whole number; 1 to 696). |
| MAC | an64 | M | Hash Message Authentication Code (HMAC) with SHA-256 algorithm |
| OrderDesc | ans..768 | M | Description of purchased goods, unit prices etc. |
| UserData | ans..1024 | O | If specified at request, Paygate forwards the parameter with the payment result to the shop |
| CCNr | n..19 | M | Credit card number at least 12-digit, numerical without spaces. You can optionally transmit also a pseudo card number (PCN) |
| CCEpiry | n6 | M | Credit card expiry date (YYYYMM), e.g. 201807 |
| CCBrand | a..22 | M | Card type: VISA, MasterCard, AMEX, Diners. Please note the spelling! |

| | | | |
|-----------------------------|---------|---|--|
| CreditCardHolder | ans..60 | O | Name of the card holder |
| RTF | a1 | O | „I“ for initializing recurrent payments |
| ReqID | ans..32 | O | To avoid double payments, enter an alphanumeric value which identifies your transaction and may be assigned only once. If the transaction is submitted again with the same ReqID, Paygate will not carry out the payment, but will just return the status of the original transaction. |
| | | | |
| CountryCode | a..3 | O | Country code 2 or 3 digits according to ISO 3166 for selecting the credentials. Presently only ZAF and NGA allowed. The default is ZAF. |
| Customer data | | | |
| FirstName | ans..64 | M | First name of the customer |
| LastName | ans..64 | M | Last name of the customer |
| eMail | ans..64 | O | Email address of the customer |
| MobileNr | ans..40 | O | Customer's mobile telephone number |
| SocialSecurityNumber | ans..50 | O | Customer's Social security number |
| CustomerID | ans..64 | C | Customer number. If customer number is not submitted instead the email address is transferred to PayU. For recurring payments the CustomerID is mandatory. |

Parameters for credit card payments with PayU Africa via socket connection

The following table gives the parameters with which Paygate responds:

| Parameter | Format | CND | Description |
|--------------------|-----------|-----|--|
| MID | ans..30 | M | MerchantID, assigned by Computop |
| PayID | an32 | M | ID assigned by Paygate for the payment, e.g. for referencing in batch files. |
| XID | an32 | M | ID for all single transactions (authorisation, capture, credit note) for one payment assigned by Paygate |
| TransID | ans..64 | M | Merchant's transaction number |
| Status | a..30 | M | OK or FAILED |
| Description | ans..1024 | M | Further details in the event that payment is rejected. Please do not use the Description but the Code parameter for the transaction status analysis! |
| Code | n8 | M | Error code according to Paygate Response Codes Excel file (part of the software client from www.computop.de/manual) |
| CodeExt | ans..10 | O | Error code from PayU, if agreed with Computop support |
| ErrorText | ans..256 | O | Error text from PayU, if agreed with Computop support |
| RefNr | ns..30 | O | Merchant's unique reference number |
| UserData | ans..1024 | O | If specified at request, Paygate forwards the parameter with the payment result to the shop. |
| MAC | an64 | M | Hash Message Authentication Code (HMAC) with SHA-256 algorithm |
| PCNr | n..16 | O | Pseudo Card Number: Random number generated by Paygate which represents a genuine credit card number. The pseudo card number (PCN) starts with 0 and the last 3 digits correspond to those of the real card number. You can use the PCN like a genuine card number for authorisation, capture and credits. |
| CCBrand | a..22 | O | In combination with PCNr: Name of credit card brand like Visa, MasterCard etc. |
| CCExpiry | n6 | O | In combination with PCNr: Expiry date of the credit card in the format YYYYMM. |

| | | | |
|----------------------|---------|---|--|
| MaskedPan | an..19 | O | Masked card number 6x4 |
| TransactionID | ans..64 | C | Transaction ID from PayU |
| TokenExt | an..64 | C | For recurring payments (RTF=I) the Token is transmitted for referencing the credit card data |

Result parameters for socket connection with PayU Africa

Recurring credit card payment via Server-to-Server connection

In order to execute a recurring credit card payment with PayU Africa in South Africa or Nigeria via a server-to-server connection, call the following URL:

<https://www.computop-paygate.com/direct.aspx>

Notice: For security reasons, Paygate rejects all payment requests with formatting errors. Therefore, please use the correct data type for each parameter.

The following table describes the encrypted payment request parameters:

| Parameter | Format | CND | Description |
|-------------------------|-----------|-----|--|
| MerchantID | ans..30 | M | MerchantID, assigned by Computop |
| TransID | ans..64 | M | Merchant's transaction number |
| RefNr | ns..30 | C | Merchant's reference number, mandatory for the initial payment of a new abo (RTF=I) |
| Amount | n..12 | M | Amount in the smallest currency unit (e.g. ZAR Cent) Please contact the helpdesk, if you want to capture amounts < 100 (smallest currency unit). |
| Currency | a3 | M | Currency, three digits DIN / ISO 4217 Presently only ZAR allowed. |
| Capture | an..6 | OC | Determines the type and time of capture. AUTO : capturing immediately after authorisation (default value). MANUAL : capturing made by the merchant. <Number> : Delay in hours until the capture (whole number; 1 to 696). |
| MAC | an64 | M | Hash Message Authentication Code (HMAC) with SHA-256 algorithm |
| OrderDesc | ans..768 | M | Description of purchased goods, unit prices etc. |
| UserData | ans..1024 | O | If specified at request, Paygate forwards the parameter with the payment result to the shop |
| CCNr | n..19 | M | Pseudo card number |
| CCEpiry | n6 | M | Credit card expiry date (YYYYMM), e.g. 201807 |
| CCBrand | a..22 | M | Card brand: only VISA, MasterCard, AMEX, Diners. Please note the spelling! |
| CreditCardHolder | ans..60 | O | Name of the card holder |
| RTF | a1 | O | „I“ for initializing recurrent payments |
| ReqID | ans..32 | O | To avoid double payments, enter an alphanumeric value which identifies your transaction and may be assigned only once. If the transaction is submitted again with the same ReqID, Paygate will not carry out the payment, but will just return the status of the original transaction. |
| TokenExt | a1 | O | „R“ for executing recurrent payments |
| Customer data | | | |
| FirstName | ans..64 | M | First name of the customer |

| | | | |
|-----------------------------|---------|---|--|
| LastName | ans..64 | M | Last name of the customer |
| eMail | ans..64 | O | Email address of the customer |
| MobileNr | ans..40 | O | Customer's mobile telephone number |
| SocialSecurityNumber | ans..50 | O | Customer's Social security number |
| CustomerID | ans..64 | C | Customer number. If customer number is not submitted instead the email address is transferred to PayU. For recurring payments the CustomerID is mandatory. |

Parameters for recurring credit card payments with PayU Africa via socket connection

The following table gives the parameters with which Paygate responds:

| Parameter | Format | CND | Description |
|--------------------|-----------|-----|--|
| MID | ans..30 | M | MerchantID, assigned by Computop |
| PayID | an32 | M | ID assigned by Paygate for the payment, e.g. for referencing in batch files. |
| XID | an32 | M | ID for all single transactions (authorisation, capture, credit note) for one payment assigned by Paygate |
| TransID | ans..64 | M | Merchant's transaction number |
| Status | a..30 | M | OK, AUTHORIZED or FAILED |
| Description | ans..1024 | M | Further details in the event that payment is rejected. Please do not use the Description but the Code parameter for the transaction status analysis! |
| Code | n8 | M | Error code according to Paygate Response Codes Excel file (part of the software client from www.computop.de/manual) |
| CodeExt | ans..10 | O | Error code from PayU, if agreed with Computop support |
| ErrorText | ans..256 | O | Error text from PayU, if agreed with Computop support |
| RefNr | ns..30 | O | Merchant's unique reference number |
| UserData | ans..1024 | O | If specified at request, Paygate forwards the parameter with the payment result to the shop. |
| MAC | an64 | M | Hash Message Authentication Code (HMAC) with SHA-256 algorithm |

Result parameters for socket connection with PayU Africa

Capture of a payment with PayU Africa

Captures are possible via a Server-to-Server connection. To carry out a Capture for a payment with PayU Africa via a Server-to-Server connection please use the following URL:

<https://www.computop-paygate.com/capture.aspx>

Notice: For security reasons, Paygate rejects all payment requests with formatting errors. Therefore, please use the correct data type for each parameter.

The following table describes the encrypted payment request parameters:

| Parameter | Format | CND | Description |
|-------------------|---------|-----|----------------------------------|
| MerchantID | ans..30 | M | MerchantID, assigned by Computop |

| | | | |
|-----------------|---------|---|---|
| PayID | an32 | M | ID assigned by Paygate for the payment to be credited |
| TransID | ans..64 | M | TransactionID which should be unique for each payment |
| Amount | n..12 | M | Amount in the smallest currency unit (e.g. ZAR Cent) Please contact the helpdesk, if you want to capture amounts < 100 (smallest currency unit). |
| Currency | a..3 | M | Currency, three digits DIN / ISO 4217 Presently only ZAR allowed. |
| MAC | an64 | M | Hash Message Authentication Code (HMAC) with SHA-256 algorithm |
| RefNr | ns..30 | O | Unique reference number which appears on your printed card account or in the EPA-file (Electronic Payment Advice). Format must be mutually agreed beforehand with Computop! |

Parameters for captures of PayU Africa via socket connections

The following table describes the Paygate response parameters:

| Parameter | Format | CND | Description |
|--------------------|-----------|-----|--|
| MID | ans..30 | M | MerchantID, assigned by Computop |
| PayID | an32 | M | ID assigned by Paygate for the payment, e.g. for referencing in batch files. |
| XID | an32 | M | ID for all single transactions (authorisation, capture, credit note) for one payment assigned by Paygate |
| TransID | ans..64 | M | Merchant's transaction number |
| Status | a..30 | M | OK or FAILED |
| Description | ans..1024 | M | Further details in the event that payment is rejected. Please do not use the Description but the Code parameter for the transaction status analysis! |
| Code | n8 | M | Error code according to Paygate Response Codes Excel file (part of the software client from www.computop.de/manual) |
| MAC | an64 | M | Hash Message Authentication Code (HMAC) with SHA-256 algorithm |
| RefNr | ns..30 | O | Merchant's unique reference number |
| CodeExt | n..10 | O | Error code from PayU, if agreed with Computop support |
| ErrorText | ans..256 | O | Error text from PayU, if agreed with Computop support |

Response parameters for captures of PayU Africa via socket connections

Credit with reference

Credits (refunds) are possible via a Server-to-Server connection. For a Credit with reference to a capture the amount of the Credit is limited to the amount of the previous capture.

To carry out a credit, please use the following URL:

<https://www.computop-paygate.com/credit.aspx>

Notice: For security reasons, Paygate rejects all payment requests with formatting errors. Therefore, please use the correct data type for each parameter.

The following table describes the encrypted payment request parameters:

| Parameter | Format | CND | Description |
|-------------------|---------|-----|----------------------------------|
| MerchantID | ans..30 | M | MerchantID, assigned by Computop |

| | | | |
|------------------|----------|---|---|
| PayID | an32 | M | ID assigned by Paygate for the payment to be credited |
| TransID | ans..64 | M | TransactionID which should be unique for each payment |
| Amount | n..12 | M | Amount in the smallest currency unit (e.g. ZAR Cent) Please contact the helpdesk, if you want to capture amounts < 100 (smallest currency unit). |
| Currency | a..3 | M | Currency, three digits DIN / ISO 4217 Presently only ZAR allowed. |
| MAC | an64 | M | Hash Message Authentication Code (HMAC) with SHA-256 algorithm |
| OrderDesc | ans..100 | O | Description of refunded goods, unit prices, merchant's comment etc. |

Parameters for credit of credit card payments with PayU Africa via socket connection

The following table describes the Paygate response parameters:

| Parameter | Format | CND | Description |
|--------------------|-----------|-----|--|
| MID | ans..30 | M | MerchantID, assigned by Computop |
| PayID | an32 | M | ID assigned by Paygate for the payment, e.g. for referencing in batch files. |
| XID | an32 | M | ID for all single transactions (authorisation, capture, credit note) for one payment assigned by Paygate |
| TransID | ans..64 | M | Merchant's transaction number |
| Status | a..30 | M | OK or FAILED |
| Description | ans..1024 | M | Further details in the event that payment is rejected. Please do not use the Description but the Code parameter for the transaction status analysis! |
| Code | n8 | M | Error code according to Paygate Response Codes Excel file (part of the software client from www.computop.de/manual) |
| MAC | an64 | M | Hash Message Authentication Code (HMAC) with SHA-256 algorithm |
| CodeExt | n..10 | O | Error code from PayU, if agreed with Computop support |
| ErrorText | ans..256 | O | Error text from PayU, if agreed with Computop support |

Response parameters for credit of credit card payments with PayU Africa via socket connection

BATCH PROCESSING VIA THE INTERFACE

Basic information about using Batch files and about their structure can be found in the Batch Manager manual.

This section describes the parameters which must be transferred within the data set (**Record**) for executing payments / credits with PayU India and which information can be found within the response file about the payment status.

Following table gives an overview of all batch versions that are possible for a specific action and their specialities:

| Action | Version | Description |
|----------------------------|-------------|--|
| Authorize (CC only) | 1.0 / 2.0 | Standard version without return of parameter Code |
| | 1.x / 2.x | with RefNr (valid for all versions other than 1.0) |
| | 1.2 / 2.2 | with textfeld1, textfeld2, RTF, cardholder |
| | 1.21 / 2.21 | with textfeld1, textfeld2, RTF, approvalcode, cardholder |
| | 1.3 / 2.3 | with CVC |
| | 1.5 / 2.5 | with Zone |
| Sale (CC only) | 1.0 / 2.0 | Standard version without return of parameter Code |
| | 1.x / 2.x | with RefNr (valid for all versions other than 1.0) |
| | 1.2 / 2.2 | with textfeld1, textfeld2, RTF, cardholder |
| | 1.21 / 2.21 | with textfeld1, textfeld2, RTF, approvalcode, cardholder |
| | 1.3 / 2.3 | with CVC |
| | 1.5 / 2.5 | with Zone |
| Capture | 1.0 / 2.0 | Standard version without return of parameter Code |
| | 1.x / 2.x | with RefNr (valid for all versions other than 1.0) |
| Credit | 1.0 / 2.0 | Standard version without return of parameter Code |
| | 1.x / 2.x | with RefNr (valid for all versions other than 1.0) |
| Reverse | 1.0 / 2.0 | Standard version without return of parameter Code |
| | 1.x / 2x. | with RefNr (valid for all versions other than 1.0) |

Description of the possible batch versions

The structure for a PayU Africa transaction within a Batch file to be submitted is the following:

```

HEAD,<MerchantID>,<Date>,<Version>
CC,Authorize,<Amount>,<Currency>,<TransID>,( <RefNr>,) <CCBrand>,<CCNr|PCNr>,[<CCCVC>,<CCExpiry>,<OrderDesc>[,<textfeld1>,<textfeld2>,<RTF>,<approvalcode>,<cardholder>,<Zone>]
CC,Sale,<Amount>,<Currency>,<TransID>,( <RefNr>,) <CCBrand>,<CCNr|PCNr>,[<CCCVC>,<CCExpiry>,<OrderDesc>[,<textfeld1>,<textfeld2>,<RTF>,<approvalcode>,<cardholder>,<Zone>]
CC,Capture,<Amount>,<Currency>,<TransID>,( <RefNr>,) <PayID>
CC,Credit,<Amount>,<Currency>,<TransID>,( <RefNr>,) <PayID>
CC,Reverse,<Amount>,<Currency>,<TransID>,( <RefNr>,) <PayID>
FOOT,<CountRecords>,<SumAmount>
    
```

The following table describes the individual fields and values used within the data set (record) in the batch file:

| Parameter | Format | CND | Description |
|------------------|----------|-----|--|
| Type | a..11 | M | HEAD for Header, FOOT for Footer, CC for Credit card and PayUAfrWC for WebCheckout Subsequent transactions |
| Action | a..20 | M | The parameter Action defines the type of transaction: Authorize Sale Capture Credit Reverse |
| Amount | n..12 | M | Amount in the smallest currency unit (e.g. ZAR Cent) Please contact the helpdesk, if you want to capture amounts < 100 (smallest currency unit). |
| Currency | a3 | M | Currency code, three digits DIN / ISO 4217. Presently only ZAR allowed. |
| TransID | ans..64 | M | TransactionID which should be unique for each payment |
| RefNr | ns..30 | O | Unique reference number |
| PayID | an32 | M | ID for this transaction given by Paygate |
| OrderDesc | ans..127 | O | Description of purchased goods, unit prices etc. |
| CCBrand | a..2 | M | Credit card brand like VISA, MasterCard, AMEX etc. Please note the spelling! |
| CCNr | n..16 | M | Credit card number at least 12-digit, numerical without spaces. You can optionally transmit also a pseudo card number (PCN) |
| PCNr | n..16 | M | You can optionally transmit also a pseudo card number (PCN) instead of the real credit card number |
| CCCVC | n..4 | O | Card verification number in Version 1.3: In the case of Visa and MasterCard the last 3 numbers on the signature strip of the credit card. 4 numbers in the case of American Express. |
| CCEpiry | n6 | M | Expiry date of the credit card in the format YYYYMM, e.g. 201707. |

Description of fields within the record for Batch files

The record area within the response file for Batch transactions looks as follows:

```

HEAD,<MerchantID>,<Date>,<Version>
CC,Authorize,<Amount>,<Currency>,<TransID>,( <RefNr>,) <PayID>,<CCBrand>,<CCNr|PCNr>
,[<CCCVC>,<CCEpiry>,<OrderDesc>[,<textfeld1>,<textfeld2>,<RTF>,<approvalcode>,<cardholder>,<Zone>],<Status>,<Code>
CC,Sale,<Amount>,<Currency>,<TransID>,( <RefNr>,) <PayID>,<CCBrand>,<CCNr|PCNr>,[<CCCVC>,<CCEpiry>,<OrderDesc>[,<textfeld1>,<textfeld2>,<RTF>,<approvalcode>,<cardholder>,<Zone>],<Status>,<Code>
CC,Capture,<Amount>,<Currency>,<TransID>,( <RefNr>,) <PayID>[<textfeld1>,<textfeld2>,<RTF>,<approvalcode>,<cardholder>],<Status>,<Code>
CC,Credit,<Amount>,<Currency>,<TransID>,( <RefNr>,) <PayID>,<Status>,<Code>
CC,Reverse,<Amount>,<Currency>,<TransID>,( <RefNr>,) <PayID>,<Status>,<Code>
FOOT,<CountRecords>,<SumAmount>

```

The following table describes the response parameters which the Batch Manager saves in the Record area for each transaction (standard parameters not explained here, such as <TransID> or <RefNR> and request parameters are returned unchanged and correspond to the call as specified before):

| Parameter | Format | CND | Description |
|---------------|--------|-----|--|
| Action | a..20 | M | The parameter Action defines the type of transaction: Credit Reverse |

| | | | |
|---------------|-------|---|--|
| PayID | an32 | M | ID for this transaction given by Paygate |
| Status | a..50 | M | OK or FAILED |
| Code | n8 | M | Error code according to Paygate Response Codes Excel file (part of the software client from www.computop.de/manual) |

Description of result parameters within the record for Batch files