



FashionCheque

Integration Guide

Version 6.2.1

As of: 04.10.2016

Table of Contents

- About FashionCheque 4**
 - General information about FashionCheque 4
 - Process flow chart..... 4
- Paygate interface 5**
 - Definitions 5
 - Call of Paygate interface for FashionCheque 6
 - Credit with reference..... 7
 - Reversal with reference 8

Document history

Date	Name	Change
04.10.2016	Peter Posse	First version

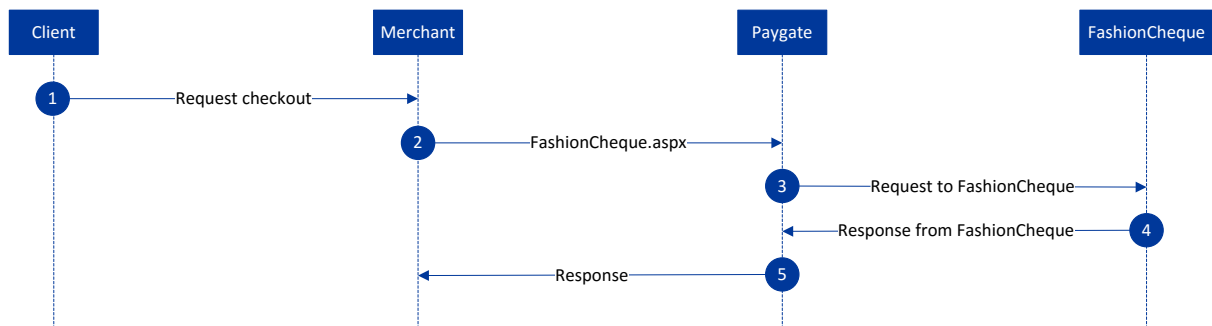
ABOUT FASHIONCHEQUE

General information about FashionCheque

FashionCheque is a prepaid gift card which is available in several European countries (Germany, Austria, Switzerland, Netherlands, Belgium and upcoming in Great Britain). FashionCheque is a gift card that can be used across different retail merchants unlike other gift card solutions which are bound to a single retailer. It is accepted already in 20.000 retail stores in Europe. In Germany for example FashionCheque is available at Galeria Kaufhof, Karstadt, Hunkemöller, Ernsting's family and other merchants.

Further information can be found on FashionCheque website (<http://www.fashioncheque.com>).

Process flow chart



FashionCheque process flow



PAYGATE INTERFACE

Definitions

Data formats:

Format	Description
a	alphabetical
as	alphabetical with special characters
n	numeric
an	alphanumeric
ans	alphanumeric with special characters
ns	numeric with special characters
bool	boolean expression (true or false)
3	fixed length with 3 digits/characters
..3	variable length with maximum 3 digits/characters
enum	enumeration of allowed values
dtm	ISODateTime (YYYY-MM-DDDhh:mm:ss)

Abbreviations:

Abbreviation	Description
CND	condition
M	mandatory
O	optional
C	conditional

Call of Paygate interface for FashionCheque

To carry out a FashionCheque payment via a Server-to-Server connection, call the following URL:

<https://www.computop-paygate.com/FashionCheque.aspx>

Notice: For security reasons, Paygate rejects all payment requests with formatting errors. Therefore please use the correct data type for each parameter.

The following table describes the encrypted payment request parameters:

Parameter	Format	CND	Description
MerchantID	ans..30	M	MerchantID, assigned by Computop
TransID	ans..64	M	Merchant transaction number, which must be unique
Amount	n..12	C	Amount in the smallest currency unit (e.g. EUR Cent) Mandatory, if value AC or CA ins submitted for parameter EventToken. Please contact the helpdesk, if you want to capture amounts < 100 (smallest currency unit).
Currency	a3	C	Currency, three digits DIN / ISO 4217 Mandatory, if value AC or CA ins submitted for parameter EventToken.
MAC	an64	M	Hash Message Authentication Code (HMAC) with SHA-256 algorithm
OperatorID	ans..20	M	ID to identify the user or the system who/which has executed the operation
CardNumber	n..19	M	Card number as it is printed on the card
VerificationCode	ans..6	M	Security code that is printed on the card
EventToken	a2	M	Abbreviation of the action to be done: - AC (activates an existing card and initializes the credit balance which is transferred via parameter Amount) - CI (returns information about the card) - CA (subtracts an amount from the card's deposit)

Parameters for FashionCheque

The following table gives the parameters with which the Paygate responds:

Parameter	Format	CND	Description
MID	ans..30	M	MerchantID, assigned by Computop
PayID	an32	M	ID assigned by Paygate for the payment, e.g. for referencing in batch files.
XID	an32	M	ID for all single transactions (authorisation, capture, credit note) for one payment assigned by Paygate
TransID	ans..64	M	Merchant's transaction number
Status	a..30	M	OK or FAILED
Description	ans..1024	M	Further details in the event that payment is rejected. Please do not use the Description but the Code parameter for the transaction status analysis!
Code	n8	M	Error code according to Paygate Response Codes Excel file (part of the software client from www.computop.de/manual)
MAC	an64	M	Hash Message Authentication Code (HMAC) with SHA-256 algorithm
CodeExt	n4	O	Error code from FashionCheque, if agreed with Computop Support
ErrorText	ans..1024	O	Error text from FashionCheque, if agreed with Computop Support

CardStatus	ans..20	O	<ul style="list-style-type: none"> - Unknown (card is not known) - Registered (card was identified, but is not active) - Active (card is active) - Suspended (card was deactivated manually) - Deactivated (card expired card limit exhausted card empty and deactivated)
CreditValue	n..12	O	Actual credit balance of the card in the smallest currency unit (e.g. EUR Cent).
InitialValue	ans..12	O	Start credit balance of the card in the smallest currency unit (e.g. EUR Cent).
Expiry	ans..19	O	Expiry date of the card in the format dd.MM.yyyy HH:mm:ss

Result parameters for FashionCheque

Credit with reference

A credit for FashionCheque is possible only with reference to a previous capture. Credits (refunds) are possible via a Server-to-Server connection. With reference to the previous capture partial credit as well as full credit are possible.

To carry out a credit with a reference transaction, please use the following URL:

<https://www.computop-paygate.com/credit.aspx>

Notice: For security reasons, Paygate rejects all payment requests with formatting errors. Therefore please use the correct data type for each parameter.

The following table describes the encrypted payment request parameters:

Parameter	Format	CND	Description
MerchantID	ans..30	M	MerchantID, assigned by Computop
PayID	an32	M	ID assigned by Paygate for the payment to be credited
TransID	ans..64	M	TransactionID which should be unique for each payment
Amount	n..12	M	Amount in the smallest currency unit (e.g. EUR Cent) Please contact the helpdesk, if you want to capture amounts < 100 (smallest currency unit).
Currency	a..3	M	Currency, three digits DIN / ISO 4217
MAC	an64	M	Hash Message Authentication Code (HMAC) with SHA-256 algorithm

Parameters for credits to FashionCheque cards

The following table describes the Paygate response parameters:

Parameter	Format	CND	Description
MID	ans..30	M	MerchantID, assigned by Computop
PayID	an32	M	ID assigned by Paygate for the payment, e.g. for referencing in batch files.
XID	an32	M	ID for all single transactions (authorisation, capture, credit note) for one payment assigned by Paygate
TransID	ans..64	M	Merchant transaction number, which must be unique
Status	a..50	M	OK or FAILED
Description	ans..1024	M	Further details in the event that payment is rejected. Please do not use the Description but the Code parameter for the transaction status analysis!

Code	n8	M	Error code according to Paygate Response Codes Excel file (part of the software client from www.computop.de/manual)
MAC	an64	M	Hash Message Authentication Code (HMAC) with SHA-256 algorithm
CodeExt	n4	O	Error code from FashionCheque, if agreed with Computop Support
ErrorText	ans..1024	O	Error text from FashionCheque, if agreed with Computop Support
CardStatus	ans..20	O	<ul style="list-style-type: none"> - Unknown (card is not known) - Registered (card was identified, but is not active) - Active (card is active) - Suspended (card was deactivated manually) - Deactivated (card expired card limit exhausted card empty and deactivated)
CreditValue	n..12	O	Actual credit balance of the card in the smallest currency unit (e.g. EUR Cent).
InitialValue	n..12	O	Start credit balance of the card in the smallest currency unit (e.g. EUR Cent).
Expiry	ans..19	O	Expiry date of the card in the format dd.MM.yyyy HH:mm:ss

Result parameters for credits to FashionCheque cards

Reversal with reference

Reversals are possible via a Server-to-Server connection. A reversal/rollback for FashionCheque is possible only with reference to a previous capture. With reference to a previous capture only a full reversal is possible.

To carry out a reversal with a reference transaction, please use the following URL:

<https://www.computop-paygate.com/reverse.aspx>

Notice: For security reasons, Paygate rejects all payment requests with formatting errors. Therefore please use the correct data type for each parameter.

The following table describes the encrypted payment request parameters:

Parameter	Format	CND	Description
MerchantID	ans..30	M	MerchantID, assigned by Computop
PayID	an32	M	ID assigned by Paygate for the transaction. Reference to the previous capture.
TransID	ans..64	M	TransactionID which should be unique for each payment
Amount	n..12	M	Amount in the smallest currency unit (e.g. EUR Cent) Please contact the helpdesk, if you want to capture amounts < 100 (smallest currency unit).
Currency	a..3	M	Currency, three digits DIN / ISO 4217
MAC	an64	M	Hash Message Authentication Code (HMAC) with SHA-256 algorithm

Parameters for reversals/rollback to FashionCheque cards

The following table describes the Paygate response parameters:

Parameter	Format	CND	Description
MID	ans..30	M	MerchantID, assigned by Computop
PayID	an32	M	ID assigned by Paygate for the payment, e.g. for referencing in batch files.



XID	an32	M	ID for all single transactions (authorisation, capture, credit note) for one payment assigned by Paygate
TransID	ans..64	M	Merchant transaction number, which must be unique
Status	a..50	M	OK or FAILED
Description	ans..1024	M	Further details in the event that payment is rejected. Please do not use the Description but the Code parameter for the transaction status analysis!
Code	n8	M	Error code according to Paygate Response Codes Excel file (part of the software client from www.computop.de/manual)
MAC	an64	M	Hash Message Authentication Code (HMAC) with SHA-256 algorithm
CodeExt	n4	O	Error code from FashionCheque, if agreed with Computop Support
ErrorText	ans..1024	O	Error text from FashionCheque, if agreed with Computop Support
CardStatus	ans..20	O	<ul style="list-style-type: none"> - Unknown (card is not known) - Registered (card was identified, but is not active) - Active (card is active) - Suspended (card was deactivated manually) - Deactivated (card expired card limit exhausted card empty and deactivated)
CreditValue	n..12	O	Actual credit balance of the card in the smallest currency unit (e.g. EUR Cent).
InitialValue	n..12	O	Start credit balance of the card in the smallest currency unit (e.g. EUR Cent).
Expiry	ans..19	O	Expiry date of the card in the format dd.MM.yyyy HH:mm:ss

Result parameters for reversals/rollback to FashionCheque cards